



TYAGI EXPORTS

Company Information -

TYAGI EXPORTS are engaged in manufacturing of an extensive range of premium quality Hair Extension and Hair Wigs. The product range offered by us consists of Indian Hair, Temple Hair, Human Hair, Bulk Hair , Closer , Frontal etc. These hair extensions are produced from high-quality hairs that are sourced from Indian Temples only. For processing these wigs and hair extensions in compliance with the prevailing market trends, the advanced machinery is used by our professionals. It is owing to their natural look, long lasting shine, tangle-free nature and higher strand strength that these wefts , closer frontals and extensions are highly demanded in the market.

Product Description -

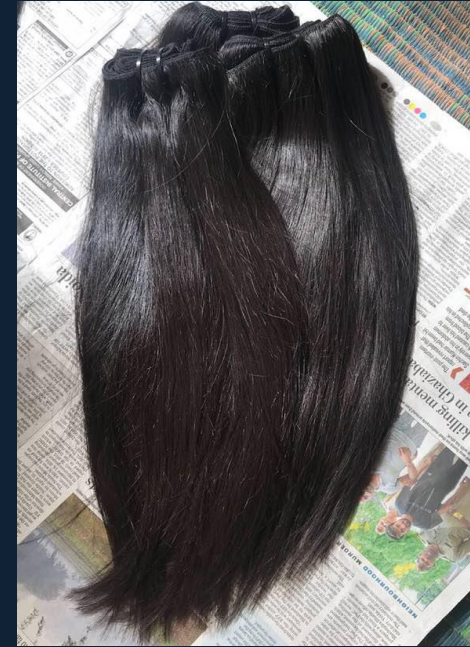
Temple hair



Wavy Hair



Curly Hair



Straight Hair

- Single donor hair virgin (not dyed).
- Cuticles aligned in same direction.
- It can colour upto 613 blonde.
- Hair life 2-3 years

Temple Closers & Frontal



Closer

Frontal

360 Frontal



wigs



Remy Hair



- Multiple donor processed hair .
- Soft Tangle Free ,No Shedding.
- Cuticles aligned in same direction by processing the hair .
- It can colour upto #27.
- Hair life 1 year

Product Description -

- *All the temple hair is collected from Indian Temples and are single donor hair only,*
- *Hair is 100% raw virgin temple hair .*
- *No chemical wash no colour.*
- *Strong weft with double wefting technique.*
- *No lice's and nits (removed by hand picking method).*
- *Natural colour no dye you can bleach upto colour no. 613(blonde).*
- *One bundle is 100 grams (3.5 ounce).*
- *Cuticles aligned in same direction.*

Packaging & Shipping -

- *We ship by Fedex and DHL both.*
- *Standard polybag packing.*
- *Custom packing for regular buyers only.*

Our Services -

- *We have a good after sales service team.*
- *Customizable colours.*
- *Good discounts on bulk orders.*
- *For Factory visits hotel pick-up's available call before coming , we will pick you up for factory visit.*

FAQ -

Q1. How many bundles do I need?

For average head size, here is my suggestion:

12"-14":2 bundles

16"-20":3 bundles

22"-28":4 bundles or more

Q2. How long does the hair last?

With proper care (clean and condition the hair regularly, the hair will last 12-24 months).

Q3. How do I know if the hair is human hair?

Human hair has natural protein. It is easy to tell by burning and smell: When it is burnt, human hair has white smoke and smells like wool burnt, and it turns to ash.

. Q4. What is the natural color hair?

Our hair is natural color, close to #1b, there is a little color shading between the material and the photo.

Q5. I paid the order yesterday, why the vendor has not sent the goods?

We will ship the hair within 24 hours after receiving your full payment.

Q6.How to order?

*You can mail yor details with , length, texture, quantity , hair type,
we will send you quotation accordingly.*

Q7.How long take delivery?

We ship the parcel by Fedex, or DHL. Normally need about 2~3 workdays to USA. 3~4 workdays to UK. And 5~6 workdays to Africa and other countries.

Q8.What is your payment terms?

Dear, we accept western union, money gram ,TT and paypal. If you pay via western union or money gram, pls kindly check send us the MTCN.

We also need your receiver name, address, phone number, zip code, email, so that we can delivery our hair for you at first time when we receive your full payment.